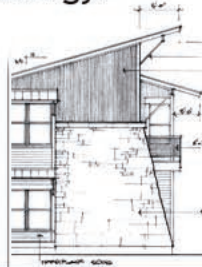


Creating a Green community means providing jobs for people of color who build it and providing homes that are affordable to working and low income residents. We need to redefine environmental construction as redesigning entire communities so people can get to where they need to go without individuals owning cars.

Adding eco-gadgets to sprawling oversized houses is *not* Green. Should individual, above ground homes be a thing of the past? Is it time for new homes to be multi-family, co-housing or earth sheltered? How low can an energy efficient home go? Half as much energy as the typical home of today? A tenth as much energy?

Join us for a panel discussion with:

- digger, Independent Media Center
- Tim Montgomery, T M A Architects LLC
- Lenard Johnson, County Building Products
- Don Fitz, Green Party of St. Louis [moderator]



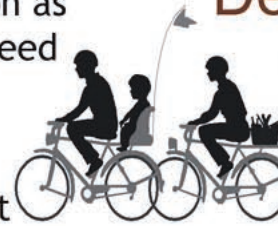
Could we actually build affordable homes that generate all the heating, cooling and electricity needed in our neighborhood?

How would we do it?



uilding Green Communities

7 pm, Wednesday
December 5, 2007



Legacy Books & Cafe
5249 Delmar (near Union)
St. Louis, MO 63108

For more info call 314-727-8554
or visit www.gateway-greens.org